

For more information on the Spring 2025
Bus Trips,

Please Call Karin at 604 983-6488



**All return times are approximate
and subject to traffic.**

Accessibility Levels

We offer a variety of trips for you to enjoy; accessibility categories are defined below. Call us for wheelchair trip bookings.

NOT ACCESSIBLE (NA)

- No Walkers or Wheelchairs
- Active Participation Required
- Medium to long walks over uneven surfaces and stairs

PARTIALLY ACCESSIBLE (PA)

- Medium walks over uneven surfaces and stairs
- No Wheelchairs, Walker access may be limited

ACCESSIBLE (A)

- Walkers welcome
- Light activity with short walks
- Relatively level terrain

Cost of Lunch

Please note that the cost of lunch is **NOT INCLUDED** in the trip price unless specified. Some trips allow you to bring a brown bag lunch.



**Registration begins March 6
at 9:00 am**

**To REGISTER for a trip
Call Karin Weidner
at 604 983-6488**

**Or register online at www.nsnh.bc.ca
Or register in person at
John Braithwaite Community Centre
Please ask for NSNH volunteers to help
you.**

A trip may be cancelled 1 week before the start date if not enough people have registered. Unless otherwise indicated, all bus trips start and end at North Shore Neighbourhood House (NSNH) located at 225 East 2nd St. in North Vancouver.

Cancellation Policy

Generally, NSNH does not provide refunds for bus trips or special events. If there is a waiting list and we can sell your spot, we may be able to refund the fee. A full refund will be given for any trip or event that has been cancelled by NSNH. The Seniors Program Coordinator may authorize a refund for exceptional circumstances.

North Shore Neighbourhood House Spring 2025 Bus Trips

Seniors Age 55+

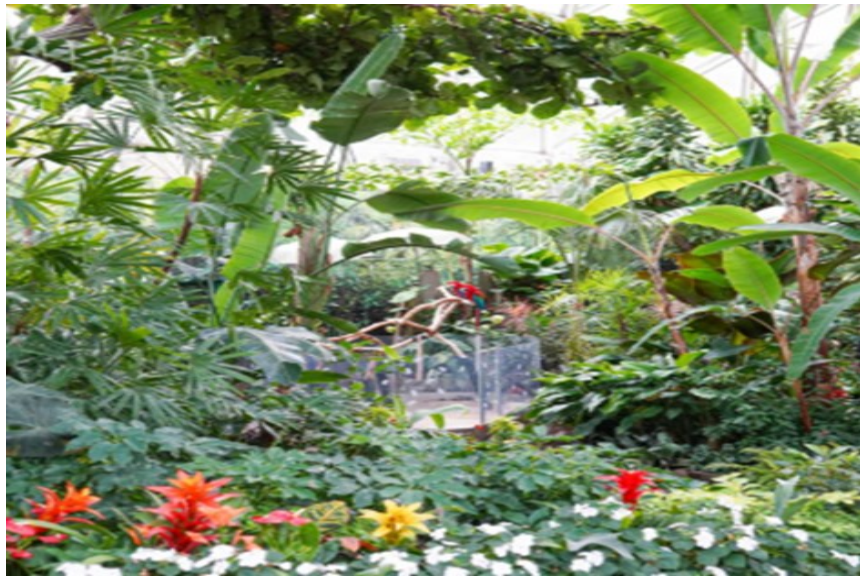
Day Trips	Day	Date	Time	Price
Bloedel Conservatory Botanical Garden	Thu	April 3	9:30am - 3:00pm	\$35
Fort Langley Adventure	Thu	April 10	10:00am - 3:30pm	\$27
Mandeville Gardens Excursion	Thu	April 24	10:00am - 3:00pm	\$20
Mother's Day Lunch at the Sylvia Hotel	Thu	May 8	10:30am - 3:00pm	\$25
Hard Rock Casino	Thu	May 15	9:30am - 3:30pm	\$30
Critter Care Wildlife Society	Thu	May 22	9:00am - 3:30pm	\$40
Port Moody Train Museum	Thu	May 29	9:00 am - 3:00pm	\$38
Historic Stewart Farm	Thu	June 5	10:00 am - 4:00pm	\$36
Explore Granville Island	Thu	June 12	10:00am - 3:00pm	\$27
Pacific Spirit Park Field Trip	Thu	June 19	9:00 am - 4:00pm	\$40
Bowen Island	Thu	June 26	9:30am - 4:00pm	\$35

Bloedel Conservatory Botanical Garden Accessible

A must-see indoor attraction located in this designated heritage building, the Bloedel Conservatory in Queen Elizabeth Park. The Conservatory is a domed lush paradise with more than 100 exotic birds and 500 exotic plants and flowers. Then enjoy lunch (extra cost) and the view at *Seasons in the Park*.

Price includes admission to the Conservatory

9:30am– 3:00pm Thursday April 3 \$ 35



Please note the cost of lunch is not included!

Fort Langley Adventure

Partially Accessible

Travel back in time to the 1800s at the Fort Langley National Historic Site, a former fur trading post of the Hudson's Bay Company. Enjoy a self-guided stroll in this quaint historic village and visit museums, art galleries, shops and restaurants (extra cost).

10:00am– 3:30pm Thursday April 10 \$ 27



Mandeville Gardens Excursion

Accessible

This BC owned and operated company offers beautiful plants, garden supplies, pottery & home décor plus expert advice for your gardening needs. Enjoy lunch (extra cost) at the *Café at Mandeville*, one of the best hidden gems in Burnaby.

10:00am– 3:00pm Thursday April 24 \$ 20



Mother's Day Lunch at the Sylvia Hotel Accessible

A Mother's Day treat is to dine (extra cost) at Vancouver's iconic treasure built in 1912. **The Sylvia Hotel** remains one of the few publicly accessible heritage buildings in Vancouver. After lunch stroll along English Bay or relax and enjoy the view by the waterfront.

10:30am-3:00pm Thursday May 8 \$25



Hard Rock Casino, Coquitlam Accessible

May Lady Luck be on your side today. The gaming floor offers 951 slot machines and several table games like blackjack, roulette and baccarat. The casino also boasts a variety of restaurants, including the award-winning **Gordon Ramsay Burger**.

9:30am-3:30pm Thursday May 15 \$30



Critter Care Wildlife Society Partially Accessible

Critter Care Wildlife Society specializes in the treatment, care and release of sick, injured and orphaned Native Mammal species. They are the only facility in BC specializing in the care of mammals and one of only three bear rehabilitation facilities in BC. A stop for lunch (extra cost) is at **Poseidon** Greek Restaurant.

Price includes Presentation and Critter visit

9:00am– 3:30pm Thursday May 22 \$40



Port Moody Train Museum Partially Accessible

Exhibitions at the Museum include the building itself – the second CPR station for Port Moody, the 1920s sleeper car “Venosta”, and gallery space. After the tour enjoy free time to explore Port Moody, visit the shops, galleries or POMOArts. Bring your own lunch or dine at one of the local restaurants (extra cost). **Price includes Guided Museum Tour**

9:00am-3:00pm Thursday May 29 \$38



Historic Stewart Farm

Partially Accessible

Enjoy brunch (extra cost) at *Rosie's Country Café* then visit the Stewart Farm in Surrey. This local heritage site dates back to the 1800s and is a gem nestled on Crescent Road along the Nikomekl River—where history comes alive.

Price includes Guided Farm Tour

10:00am– 4:00pm Thursday June 5 \$36



Explore Granville Island

Accessible

Embark on a self-guided tour to discover the many changes on Granville Island. Enjoy lunch (extra cost) at one of the many restaurants or specialty market stalls.

10:00am-3:00pm Thursday June 12 \$27



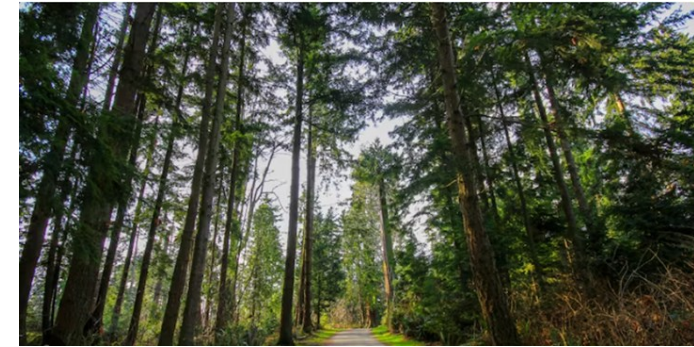
Pacific Spirit Park Field Trip

Not Accessible

Discover the “Secret Life of Trees” on this adventure. Are trees able to smell? Do trees talk to each other? Come on this guided walk to uncover some of the mysteries and surprising facts about these forest giants. Lunch (extra cost) is at The Wolf & Hound.

Price includes Guided Park Interpreter Tour

9:00am-4:00pm Thursday June 19 \$40



Bowen Island

Accessible

The bus will take you right to Snug Cove (a 20-minute ferry ride). Enjoy lunch (extra cost) at one of the local restaurants, explore the island or visit the Bowen Island Museum and Archives.

9:00am – 4:00pm Thursday June 26 \$35



Please see accessibility levels explained on the back, and only attend trips that are suited to your abilities.